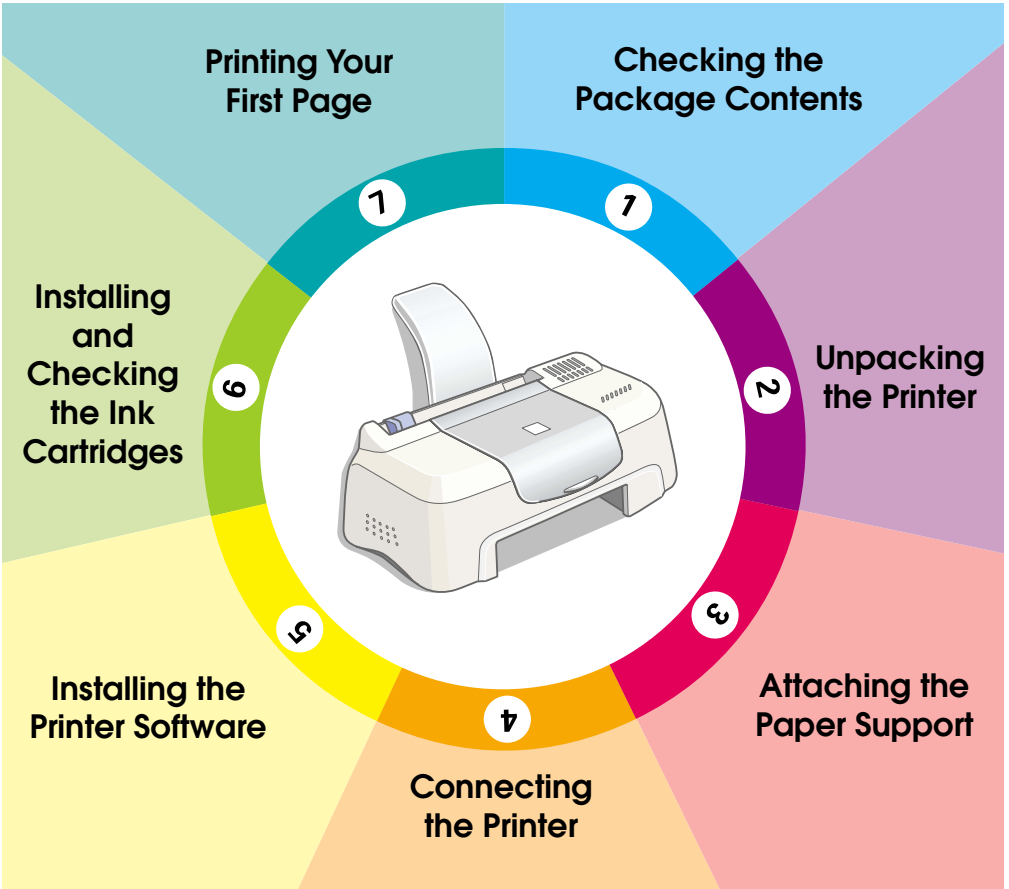


EPSON

Color Ink Jet Printer

EPSON STYLUS™ COLOR 480



Setup Guide

1

Checking the Package Contents



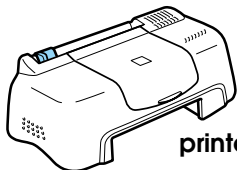
paper support



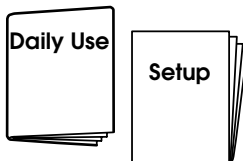
printer software &
Reference Guide CD-ROM



ink cartridge package
(contains both black and
color ink cartridges.)



printer



paper manuals



power cord*

* The power cord may come
attached to the printer in
certain locations.

The package contents may vary in certain locations.

Packaged with your printer are both black and color ink cartridges to start you printing straight away. In order to ensure your printer produces the highest quality printouts, some of the ink will be used in the initial setup and check process. This will not happen with your next set of cartridges.

Please note: the use of genuine EPSON consumables is recommended to ensure that printout quality and trouble-free operation is maintained.

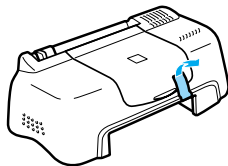
Follow steps 1 through 5 in this manual to install the printer software. After the software installation is complete, follow the on-screen messages and proceed to step 6. To ensure that your printer is operating correctly, proceed to step 7 after an on-screen message informs you that the setup is complete.

2

Unpacking the printer

Remove all tape and protective materials attached to the printer.

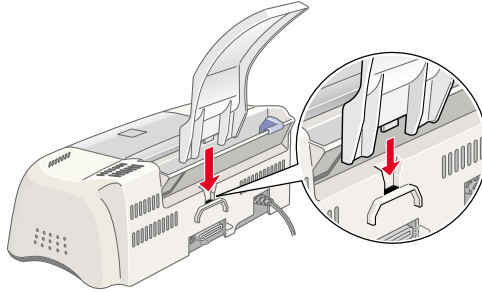
* The number of tape strip used may vary from what is shown.



3

Attaching the Paper Support

Insert the paper support into the slots at the rear of the printer and place the printer on a flat, stable surface. Leave enough space in front of the printer for paper to be ejected smoothly.



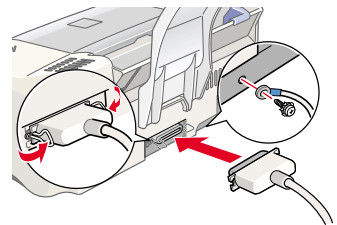
4

Connecting the Printer

Your printer connects to your computer via a shielded, twisted-pair parallel interface. Make sure that the parallel cable supports bidirectional communication. Otherwise, the printer will not work. Depending upon your geographic location, you may need to obtain the appropriate cable. See "Options and Consumable Products" in the *Daily Use* guide for details.

Follow these steps to connect the printer to your PC.

1. Make sure that the computer is turned off, and the printer's power cord is unplugged.
2. Plug the cable connector securely into the printer's interface connector. Then squeeze the wire clips together until they lock in place on both sides. If your cable has a ground wire, connect it to the ground connector below the interface connector.
3. Plug the other end of the cable into the computer's parallel interface. If there is a ground wire at the computer end of the cable, connect it to the ground connector at the back of the computer.



5

Installing the Printer Software


After connecting the printer to your computer, you need to install the software included on the “Printer Software for EPSON Stylus COLOR 480” CD-ROM shipped with your printer.

If you wish to make a floppy disk version of the printer software on your CD-ROM, you can use the driver disk creation utility included on the CD.

Note:

- ❑ *When using Windows 2000, if you do not follow the steps below to install the printer software, Microsoft’s Universal driver may be installed instead. To see if the Universal driver has been installed, right click anywhere in the printer driver window and then click About in the list that appears. If a screen containing the words Unidrv Printer Driver is displayed, follow the steps below to reinstall the printer driver.*
- ❑ *If the Digital Signature Not Found dialog box appears during the installation process, click Yes. If you click NO, you must reinstall the printer software as described below.*

Follow these steps to install your printer software.

1. Make sure that your printer is unplugged.
2. Turn on your computer and start Windows. If the New Hardware Found dialog box or any other Wizard appears, click Cancel.
3. Insert the printer software CD shipped with your printer in the CD-ROM drive. The Installer dialog box appears. If it does not, double-click the My Computer icon. Click the CD-ROM icon, then select open from the File menu. Then double-click Epsetup.exe. (For floppy disk users, insert the disk in a disk drive and double-click the My Computer icon, then the floppy disk drive icon, and then Setup.exe.)
4. Select Install Printer Driver/Utility, and click . Then click OK in the dialog box that appears to start the printer software installation.
5. Follow the on-screen instructions to plug the power cord into a properly grounded electrical outlet. Before plugging in the cord, check the label on the back of the printer to make sure the voltage required by the printer matches that of the electrical outlet you will plugging it into. Also, make sure that you have the correct power cable for your power source.





Caution:

It is not possible to change the printer's voltage. If the rated voltage and your outlet voltage do not match, contact your dealer for assistance. Do not plug in the power cord.

Note:

If the power cord is not attached to the printer, connect it to the AC inlet on the back of the printer.

6. After plugging in the power cord, the Setup utility opens automatically. If a message informs you to restart your computer, follow the instructions.



Installing and Checking the Ink Cartridges

When your printer software installation is complete, the Setup utility opens automatically. The Setup utility leads you through the ink cartridge installation process and then prints nozzle and print head alignment check patterns to ensure that your printer is operating correctly. Follow the on-screen instructions. When an on-screen message informs you that the ink cartridge installation is complete, click OK and proceed to step [7](#).

Note:

- ❑ *After the setup process is complete, a printer-shaped shortcut icon appears on the Windows taskbar. For details on how to use this icon see "Monitoring Preferences" in your online Reference Guide.*
- ❑ *If you did not use the Setup utility to install ink cartridges, use EPSON Status Monitor3 to install them. To access EPSON Status Monitor3, right click the printer shortcut icon on the taskbar, and choose EPSON Stylus COLOR 480. Then click the How to button.*

Installing the Ink Cartridges

Please pay attention to the following information when installing the ink cartridges.

**Warning:**

The ink cartridges are self-contained units. Under ordinary use, ink will not leak from a cartridge. If ink does get on your hands, wash them thoroughly with soap and water. If ink gets into your eyes, flush them immediately with water.

**Caution:**

- You must remove the yellow tape seals from the cartridges before installing them; otherwise, the cartridges will become unusable.
- Do not remove the blue portion of the tape seals from the cartridges; otherwise, the cartridges may become clogged and unable to print.
- Do not remove the tape seals from the bottom of the cartridges; otherwise, ink will leak.
- Once you install the ink cartridges, do not open their clamps again until you replace the ink cartridges; otherwise, the cartridges may become unusable.
- Do not move the print head by hand; otherwise, you may damage the printer.

Note:

- Do not open the ink cartridge packages until just before you install them, or the ink may dry up.
- Install both ink cartridges. If either of the cartridges is not installed, the printer will not work.

Checking the printer

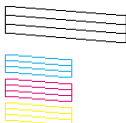
After installing the ink cartridges, the Setup utility automatically guides you through the nozzle check and print head alignment check. Follow the on-screen instructions.

Nozzle check

The printer will print a test pattern, allowing you to check if any nozzles are clogged.

Here are sample printouts.

Good sample



Print head needs to be cleaned.



If the printout is satisfactory, proceed to the next section, “Print head alignment.”

If the nozzle check page does not print satisfactorily (for example, if any segment of the printed lines is missing), click Cleaning to clean the print heads.

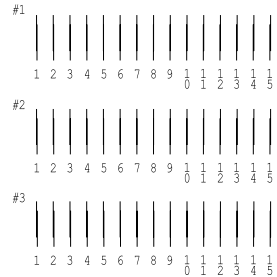
If print quality hasn’t improved after repeating the nozzle checking and cleaning procedures four or five times, contact your dealer.

Print head alignment

The printer will print test patterns, allowing you to check if the print head is aligned.

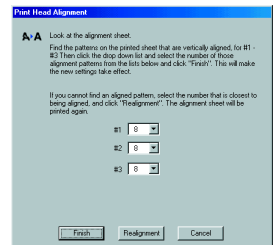
Here are sample printouts.

From each pattern on the printed test sheet, choose the vertical line that is aligned best. For each pattern, select the corresponding line number from the appropriate drop-down list box in the Print Head Alignment dialog box, then click Finish to put the new settings into effect.



Note:

If you cannot find a line which is aligned correctly, select the number of the line which is the closest to being correct and click Realignment. The alignment test sheet will be printed again.



Printing Your First Page

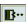
After making sure your printer is operating correctly, you are ready to print your first page. To familiarize yourself with the printer software, we recommend printing one of the sample files provided with your printer software. To print a sample file, follow the instructions in this section.

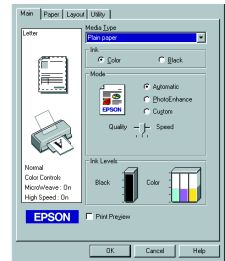
If you choose to print your own document instead, open the document in your application, then proceed to step 4 in the relevant section below, making changes where appropriate.

Note:

- ❑ See your software manual for details on how to use your application software.
- ❑ Depending on the type of document you are printing and the type of paper you are using, you may have to make settings different from those described in this section.

Follow these steps to print the sample file.

1. Make sure A4 or letter size plain paper is loaded in the printer.
2. Insert the printer driver CD-ROM. If the Installer dialog box appears, click  Quit.
3. Double-click the My Computer icon. Right-click the CD-ROM icon and click Open.
4. Double-click the sample.bmp file to open it.
5. To change the printer driver settings, open the File menu and click Print. A Print dialog box similar to the one below opens (This example is from Paint).
6. Make sure EPSON Stylus COLOR 480 is selected in the Name list box, then click Properties. The printer driver opens.
7. Click the Main tab, then click anywhere in the Media Type box and select Plain Paper.



Note:

The printer driver lets you choose from a wide variety of settings to get the best results. See your online Reference Guide for detailed information.

8. Click Close, Print, or OK to print. You may need to click a combination of these buttons.

While printing, the EPSON Progress Meter will appear, showing the printing progress and the status of your printer.

The setup process for this printer is now complete.

See the *Daily Use* guide when you want information on regular printer operations. See the *Reference Guide* included on the printer software CD-ROM for detailed information on making printer driver settings, printing on special paper, and troubleshooting.